

## QUICK START USERS GUIDE

### Contents

1. Operating system and software.....	1
2. Driver installation instructions .....	2
3. Port selection.....	2

### 1. Operating system and software

- (1) Operating system: **Windows** 
- (2) Programming software: **Manufacture Software**  or **CHIRP** 
- (3) Manufacture Software download at: [walkietalkiesoftware.com](http://walkietalkiesoftware.com)
- (4) CHIRP Software download at: <https://chirp.danplanet.com/>

### 2. Driver installation instructions (CH340 Chip)

- (1) Download the driver at: [walkietalkiesoftware.com](http://walkietalkiesoftware.com)  
-----Open **Software** page after logging in to the website.

#### Driver download

Select the driver download according to the computer system



Windows7

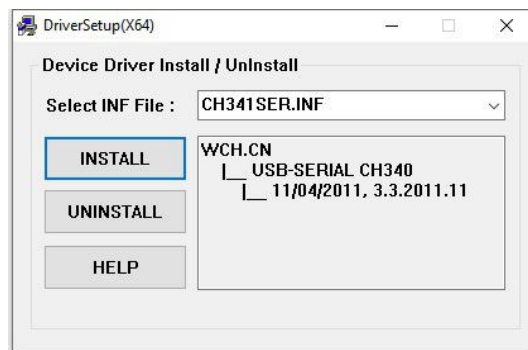


Windows8



Windows10

(2) After the download is successful, open the file to install the driver.



### 3. Port selection

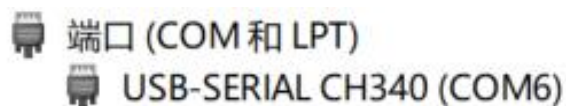
1. Get into “Windows Setting”, then search “Device Manager”.



2. Open “Device Manager”, and unfold Port (COM & LPT) to check the existing port.



3. Come with USB programming cable port is **USB-SERIAL CH340 (COM?)**



4. Select the same port in the programming software to program!

**\*If you have any problem, please don't hesitate to contact us via support: [walkietalkiesoftware.com](http://walkietalkiesoftware.com). Also visit our Facebook pages (TIDRADIO) for more help. It's always our honor to help.**